



GAT MONTHLY MEMBERSHIP PROGRESS REPORT

Results as of: 12/31/2020

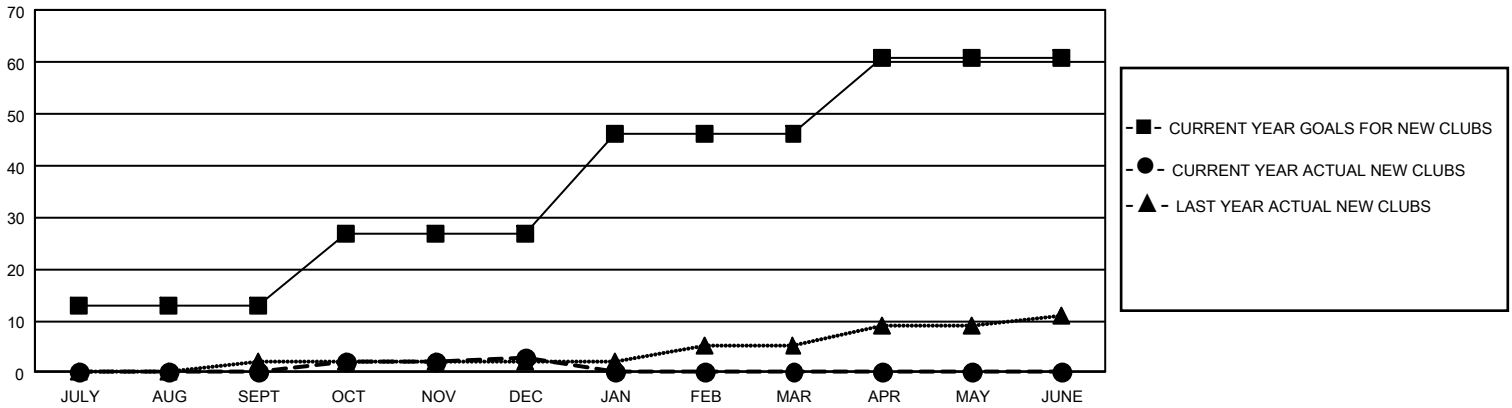
GAT Constitutional Area 5 - Japan

REPORT DOES NOT INCLUDE CLUBS IN UNDISTRICTED AREAS.

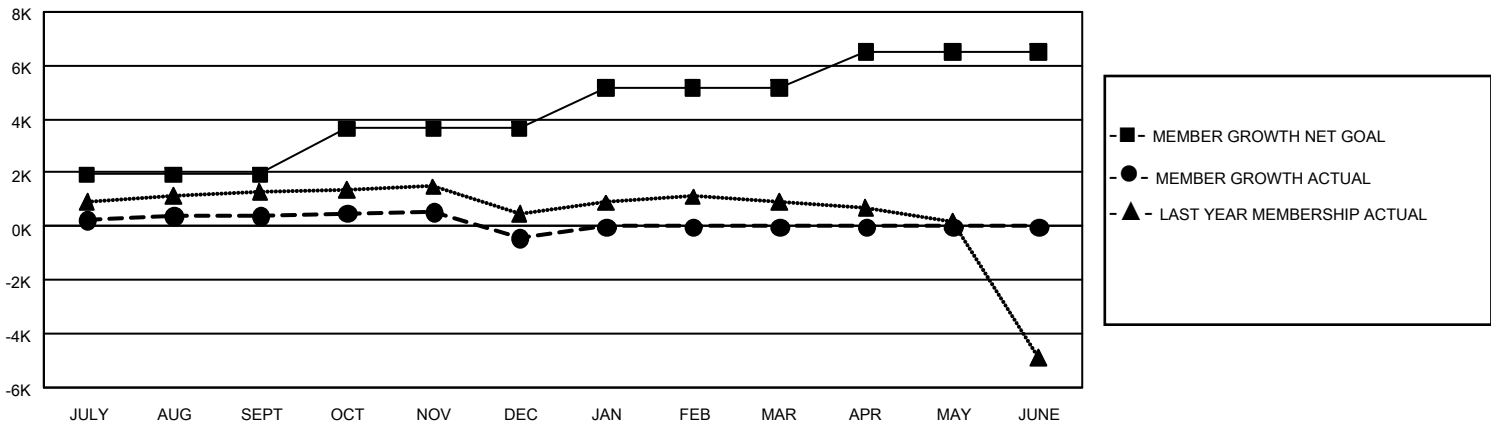
Clubs			
RESULTS FOR 2020-2021			
QUARTER	NEW CLUB GOAL	NEW CLUBS	DROPPED CLUBS
JULY/AUG/SEPT	39	0	5
OCT/NOV/DEC	42	3	12
JAN/FEB/MAR	57	0	0
APR/MAY/JUNE	45	0	0

Members			
RESULTS FOR 2020-2021			
QUARTER	MEMBER GROWTH NET GOAL	MEMBER GROWTH ACTUAL	DROPPED MEMBERS ACTUAL (including transfers)
JULY/AUG/SEPT	1924	2,283	1,798
OCT/NOV/DEC	1716	1,380	2,107
JAN/FEB/MAR	1538	0	0
APR/MAY/JUNE	1337	0	0

GOALS AND ACTUAL NEW CLUBS CUMULATIVE



GOALS AND ACTUAL MEMBERS CUMULATIVE



DROPPED CLUBS: 17	1,480 CLUBS OF 2,911 ADDED 1 OR MORE NEW MEMBERS	<u>GENDER DISTRIBUTION</u>	
<u>DROPPED MEMBERS</u>		MALE	80,567 (76.19%)
DECEASED	422	FEMALE	25,173 (23.81%)
CLUB CANCELLED	32	TOTAL FAMILY UNIT MEMBERS 38,113	
OTHER	3,450		
TOTAL	3,904		
CLICK HERE FOR CUMULATIVE MEMBERSHIP DATA			